

**ZX Evolution
Update Flash-ROM
from «Test&Service» configuration.**

(version 22.03.2013)

www.nedopc.com

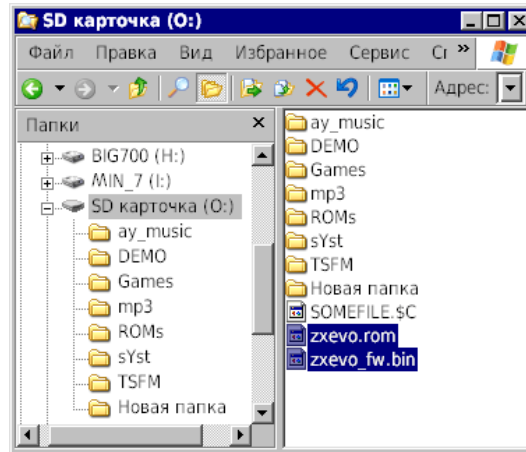
Requirement:

- SD-card, formatted FAT12, FAT16 or FAT32.
- PS/2 keyboard
- Configuration «Test&Service» file (file ZXEVO_FW.BIN)
- Flash-ROM image (file ZXEVO.ROM)
- Base configuration file (file ZXEVO_FW.BIN)

Note: any configuration files (Base configuration or «Test&Service») has same names.

All needed files located here: http://www.nedopc.com/zxevo/zxevo_eng.php

1. «Test&Service» configuration and ROM-image copy to root directory of SD-card .



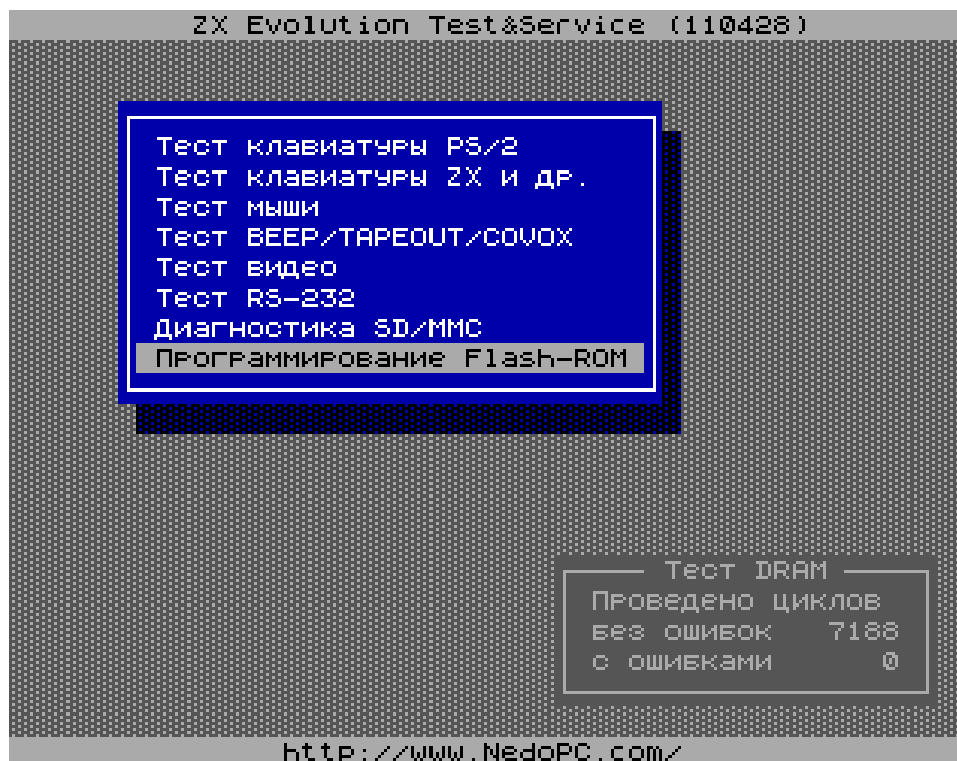
2. Set SD-card to ZX Evolution.

3. Activate bootloader: While SoftReset pins [J6] (on ZXEvolution board) shorted, short and open HardReset pins [J9]. Or while SoftReset pins [J6] shorted, switch on power to ZXEvolution.

Configuration load approximately 10 seconds. Beeper not sound on success.

Test&Service work in TV mode by default. Press ScrollLock for switching to VGA mode.

4. Set last item «Update Flash-ROM» in main menu.



5. Set to «Select image» in menu panel.

ZX Evolution Test&Service (110428)

Выход	AY_MUSIC	<DIR>	29.04.11	18:28
Воё снова	DEMO	<DIR>	29.04.11	18:31
Стереть м/сх.	GAMES	<DIR>	29.04.11	18:27
Добав. задание	MP3	<DIR>	29.04.11	18:27
Выполнить	ROMS	<DIR>	29.04.11	18:29
	SYST	<DIR>	29.04.11	18:27
	TSFM	<DIR>	29.04.11	18:28
	НОВАЯП*1	<DIR>	29.04.11	18:28
Chip: M29F040	zxevo_fw bin	65920	28.04.11	20:52
CRC: 1EE3730C	zxevo rom	524288	24.03.11	23:40
SDcard: FAT32				

alcoqluk pen	tr-dos	zx basic 128	zx basic 48
empty	empty	empty	empty
empty	empty	empty	empty
empty	empty	empty	empty
empty	empty	empty	empty
empty	empty	empty	empty
empty	empty	empty	empty
empty	empty	empty	empty

<http://www.NedoPC.com/>

6. Select file ZXEVO.ROM in file panel.

ZX Evolution Test&Service (110428)

Выход	AY_MUSIC	<DIR>	29.04.11	18:28
Воё снова	DEMO	<DIR>	29.04.11	18:31
Стереть м/сх.	GAMES	<DIR>	29.04.11	18:27
Добав. задание	MP3	<DIR>	29.04.11	18:27
Выполнить	ROMS	<DIR>	29.04.11	18:29
	SYST	<DIR>	29.04.11	18:27
	TSFM	<DIR>	29.04.11	18:28
	НОВАЯП*1	<DIR>	29.04.11	18:28
	zxevo_fw bin	65920	28.04.11	20:52
	zxevo rom	524288	24.03.11	23:40

Chip: M29F040
CRC: 1EE3730C
SDcard: FAT32

alcoqluk pen	tr-dos	zx basic 128	zx basic 48
empty	empty	empty	empty
empty	empty	empty	empty
empty	empty	empty	empty
empty	empty	empty	empty
empty	empty	empty	empty
empty	empty	empty	empty
empty	empty	empty	empty

<http://www.NedoPC.com/>

7. Press <Enter> two times.

ZX Evolution Test&Service (110428)

Выход	AY_MUSIC	<DIR>	29.04.11	18:28
Всё снова	DEMO	<DIR>	29.04.11	18:31
✓стереть м/сх.	GAMES	<DIR>	29.04.11	18:27
Добав. задание	MP3	<DIR>	29.04.11	18:27
Выполнить	ROMS	<DIR>	29.04.11	18:29
	SYST	<DIR>	29.04.11	18:27
	TSFM	<DIR>	29.04.11	18:28
	НОВАЯП*1	<DIR>	29.04.11	18:28
Chip: M29F040	zxevo_fw bin	65920	28.04.11	20:52
CRC: 1EE3730C	zxevo rom	524288	24.03.11	23:40
SDcard: FAT32				

zxevo	rom	zxevo	rom	zxevo	rom	zxevo	rom
zxevo	rom	zxevo	rom	zxevo	rom	zxevo	rom
zxevo	rom	zxevo	rom	zxevo	rom	zxevo	rom
zxevo	rom	zxevo	rom	zxevo	rom	zxevo	rom
zxevo	rom	zxevo	rom	zxevo	rom	zxevo	rom
zxevo	rom	zxevo	rom	zxevo	rom	zxevo	rom
zxevo	rom	zxevo	rom	zxevo	rom	zxevo	rom
zxevo	rom	zxevo	rom	zxevo	rom	zxevo	rom

<http://www.NedoPC.com/>

8. Select «Start» in menu panel and press <Y> on keyboard for confirmation.

ZX Evolution Test&Service (110428)

Выход	AY_MUSIC	<DIR>	29.04.11	18:28
Всё снова	DEMO	<DIR>	29.04.11	18:31
✓стереть м/сх.	GAMES	<DIR>	29.04.11	18:27
Добав. задание	MP3	<DIR>	29.04.11	18:27
Выполнить	ROMS	<DIR>	29.04.11	18:29
	SYST	<DIR>	29.04.11	18:27
	TSFM	<DIR>	29.04.11	18:28
	НОВАЯП*1	<DIR>	29.04.11	18:28
	zxevo_fw bin	65920	28.04.11	20:52
	zxevo rom	524288	24.03.11	23:40

Chip: M29F040
CRC: 1EE3730C
SDcard: FAT32
Уверен? <Y>

zxevo rom	zxevo rom	zxevo rom	zxevo rom
zxevo rom	zxevo rom	zxevo rom	zxevo rom
zxevo rom	zxevo rom	zxevo rom	zxevo rom
zxevo rom	zxevo rom	zxevo rom	zxevo rom
zxevo rom	zxevo rom	zxevo rom	zxevo rom
zxevo rom	zxevo rom	zxevo rom	zxevo rom
zxevo rom	zxevo rom	zxevo rom	zxevo rom
zxevo rom	zxevo rom	zxevo rom	zxevo rom

<http://www.NedoPC.com/>

9. First stage - Erase content of Flash-ROM chip...

```
ZX Evolution Test&Service (110428)
```

Выход	AY_MUSIC	<DIR>	29.04.11	18:28
Всё снова	DEMO	<DIR>	29.04.11	18:31
✓Стереть м/сх.	GAMES	<DIR>	29.04.11	18:27
Добав. задание	MP3	<DIR>	29.04.11	18:27
Выполнить	ROMS	<DIR>	29.04.11	18:29
	SYST	<DIR>	29.04.11	18:27
	TSFM	<DIR>	29.04.11	18:28
	НОВАЯП*1	<DIR>	29.04.11	18:28
	zxevo_fw bin	65920	28.04.11	20:52
	zxevo rom	524288	24.03.11	23:40

Chip: M29F040
CRC: 1EE3730C
SDcard: FAT32
Стирание...

```
EEEEEEEEEEEE EEEEEEEEEEEE EEEEEEEEEEEE EEEEEEEEEEEE  
EEEEEEEEEEEE EEEEEEEEEEEE EEEEEEEEEEEE EEEEEEEEEEEE  
EEEEEEEEEEEE EEEEEEEEEEEE EEEEEEEEEEEE EEEEEEEEEEEE  
EEEEEEEEEEEE EEEEEEEEEEEE EEEEEEEEEEEE EEEEEEEEEEEE  
EEEEEEEEEEEE EEEEEEEEEEEE EEEEEEEEEEEE EEEEEEEEEEEE  
EEEEEEEEEEEE EEEEEEEEEEEE EEEEEEEEEEEE EEEEEEEEEEEE  
EEEEEEEEEEEE EEEEEEEEEEEE EEEEEEEEEEEE EEEEEEEEEEEE  
EEEEEEEEEEEE EEEEEEEEEEEE EEEEEEEEEEEE EEEEEEEEEEEE  
EEEEEEEEEEEE EEEEEEEEEEEE EEEEEEEEEEEE EEEEEEEEEEEE
```

<http://www.NedoPC.com/>

...Second stage - write data from selected image...

ZX Evolution Test&Service (110428)

Выход	AY_MUSIC	<DIR>	29.04.11	18:28
Воё снова	DEMO	<DIR>	29.04.11	18:31
✓стереть м/сх.	GAMES	<DIR>	29.04.11	18:27
Добав. задание	MP3	<DIR>	29.04.11	18:27
Выполнить	ROMS	<DIR>	29.04.11	18:29
	SYST	<DIR>	29.04.11	18:27
	TSFM	<DIR>	29.04.11	18:28
	НОВАЯП*1	<DIR>	29.04.11	18:28
	zxevo_fw bin	65920	28.04.11	20:52
	zxevo rom	524288	24.03.11	23:40

Chip: M29F040
CRC: 1EE3730C
SDcard: FAT32
Запись...

#####	#####	#####	#####
#####	#####	#####	#####
#####	#####	#####	#####
#####	#####	#####	#####
#####	#####	#####	#####
#####	#####	#####	#####
#####	#####	#####	#####
#####	#####	#####	#####
#####	#####	#####	#####
#####	#####	#####	#####
#####	#####	#####	#####
#####	#####	#####	#####

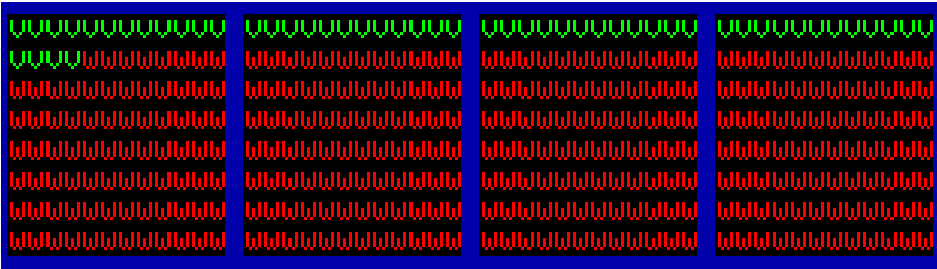
<http://www.NedoPC.com/>

...End stage - verify data...

ZX Evolution Test&Service (110428)

Выход	AY_MUSIC	<DIR>	29.04.11	18:28
Всё снова	DEMO	<DIR>	29.04.11	18:31
✓стереть м/сх.	GAMES	<DIR>	29.04.11	18:27
Добав. задание	MP3	<DIR>	29.04.11	18:27
Выполнить	ROMS	<DIR>	29.04.11	18:29
	SYST	<DIR>	29.04.11	18:27
	TSFM	<DIR>	29.04.11	18:28
	НОВАЯП*1	<DIR>	29.04.11	18:28
	zxevo_fw bin	65920	28.04.11	20:52
	zxevo rom	524288	24.03.11	23:40

Chip: M29F040
CRC: 1EE3730C
SDcard: FAT32
Проверка...



Four columns of progress bars, each starting with a green bar of 100% and followed by red bars representing the verification progress. The progress is approximately 75% for each column.

<http://www.NedoPC.com/>

...if all OK then green message viewed.

ZX Evolution Test&Service (110428)

Выход	AV_MUSIC	<DIR>	29.04.11	18:28
Воё снова	DEMO	<DIR>	29.04.11	18:31
✓стереть M			4.11	18:27
Добав.зад			4.11	18:27
Выполнить	Запись в FlashROM завершена		4.11	18:29
	Без ошибок.		4.11	18:27
			4.11	18:28
			4.11	18:28

Chip: M29

CRC: 1EE3730C	zxevo_fw bin	65920	28.04.11	20:52
SDcard: FAT32	zxevo rom	524288	24.03.11	23:40

Завершено.

<http://www.NedoPC.com/>

10. Press <Enter>. Calculate and inform about pages of Flash-ROM.

```
ZX Evolution Test&Service (110428)
```

Выход	AY_MUSIC	<DIR>	29.04.11	18:28
Всё снова	DEMO	<DIR>	29.04.11	18:31
Стереть м/сх.	GAMES	<DIR>	29.04.11	18:27
Добав. задание	MP3	<DIR>	29.04.11	18:27
Выполнить	ROMS	<DIR>	29.04.11	18:29
	SYST	<DIR>	29.04.11	18:27
	TSFM	<DIR>	29.04.11	18:28
	НОВАЯП*1	<DIR>	29.04.11	18:28
Chip: M29F040	zxevo_fw bin	65920	28.04.11	20:52
CRC: E200625F	zxevo rom	524288	24.03.11	23:40
SDcard: FAT32				

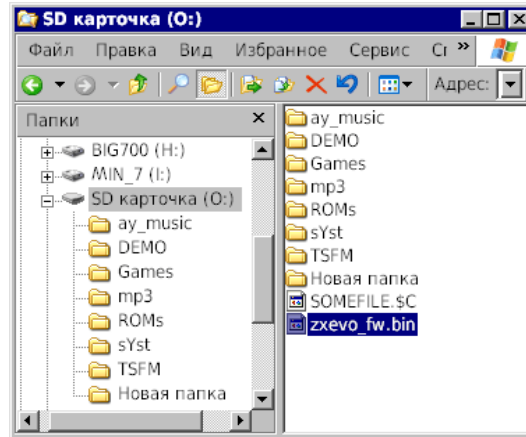
hegluk	tr-dos	zx basic 128	zx basic 48
empty	empty	empty	empty
empty	empty	empty	empty
empty	empty	empty	empty
empty	empty	empty	empty
empty	empty	empty	empty
zx basic 48	evodos	????	????
zx basic 48	evodos	zx basic 128	hegluk

<http://www.NedoPC.com/>

Some pages mark by «????». Cause TEST&SERVICE not identify this pages (cause this pages content some new parts of ROM).

Restore Base configuration.

11. Remove SD-card from ZXEvo, and delete TEST&SERVICE configuration file (zxevo_fw.bin). Copy Base configuration file (zxevo_fw.bin) to root directory of SD-card.



12. Set SD-card to ZX Evolution.

13. Activate bootloader: While SoftReset pins [J6] shorted, short and open HardReset pins [J9]. Or while SoftReset pins [J6] shorted, switch on power to ZXEvolution.

Configuration load approximately 10 seconds. Beeper not sound on success.

14. You get new configuration and ROM on your ZX Evolution. Congratulation!